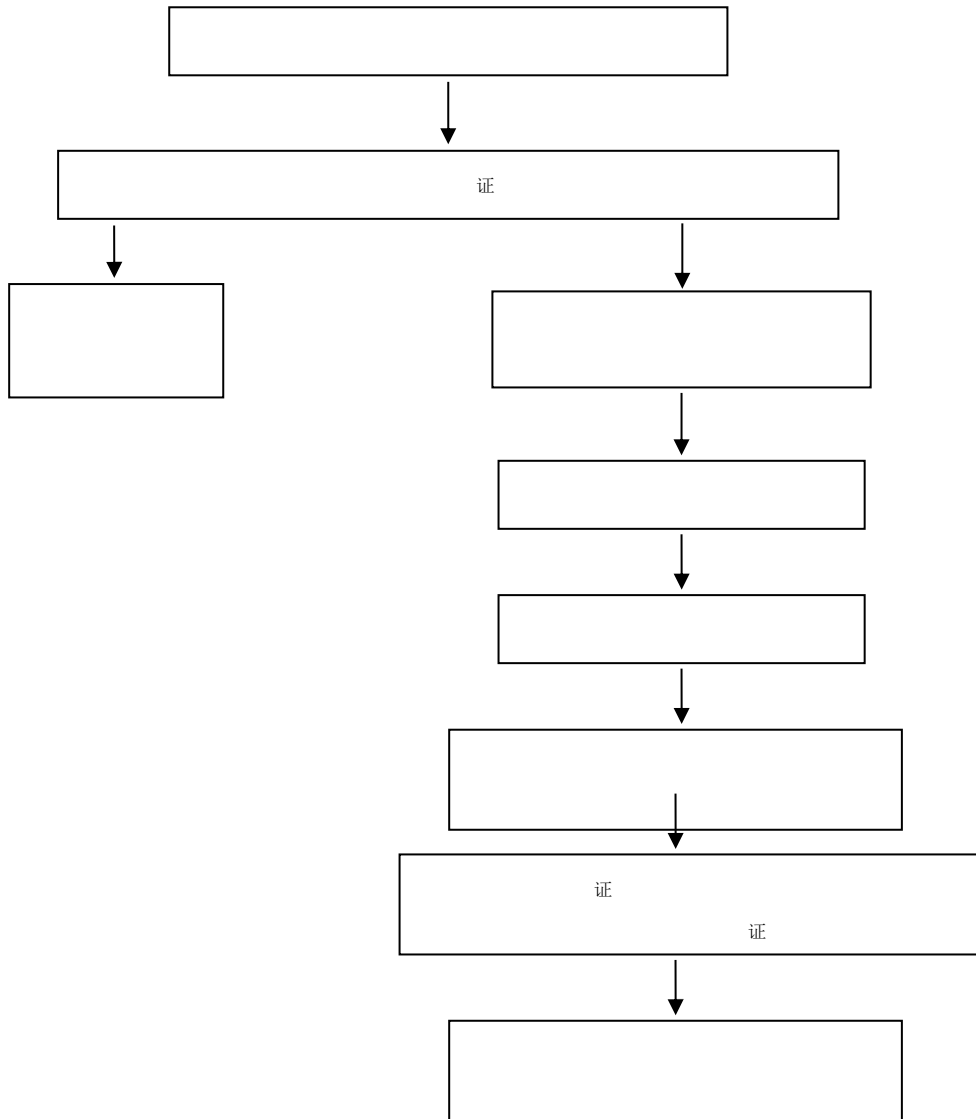


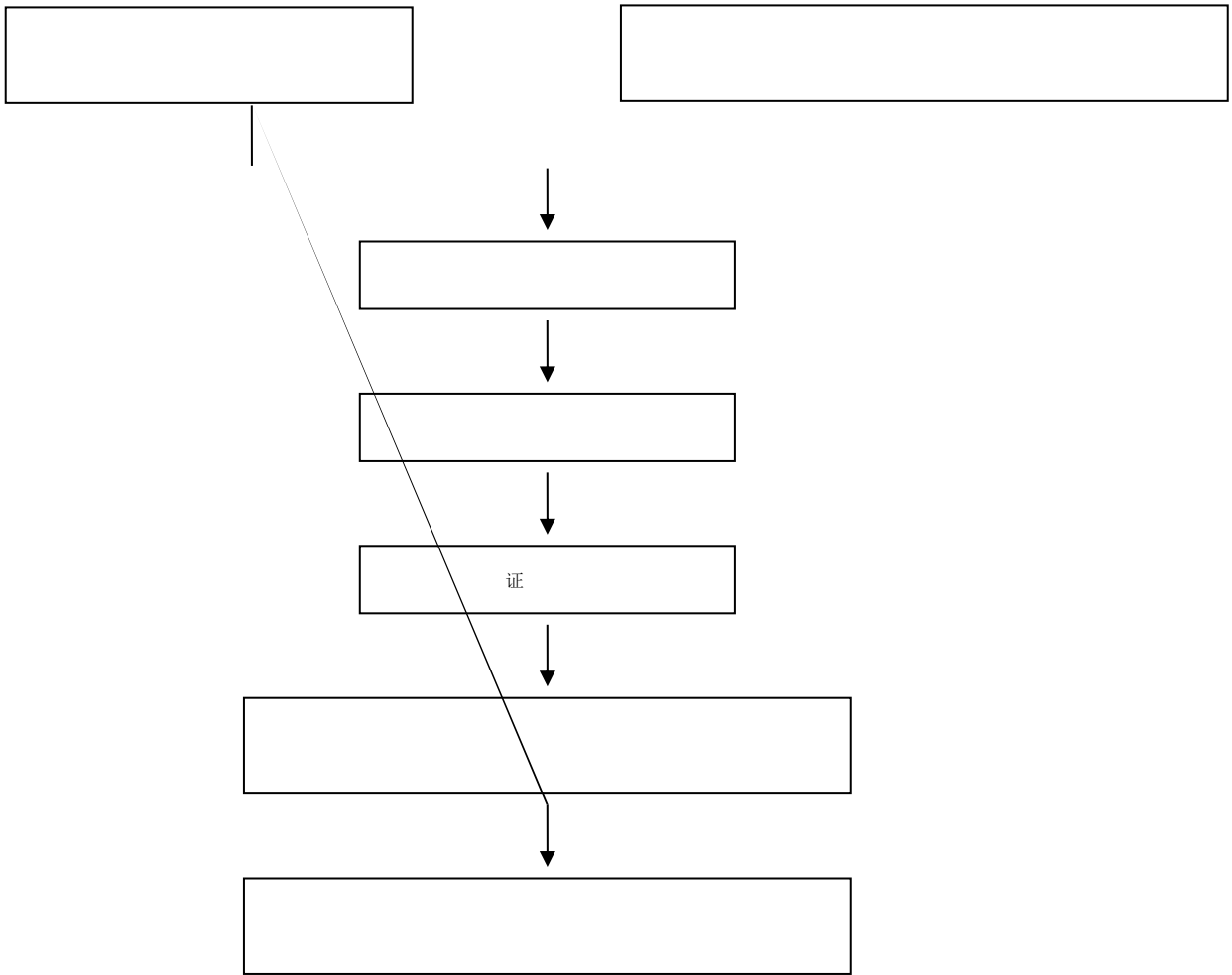
目 录

1		
2		
3		
4		
5		
6		
7		
8		
9		
10		
11	证 遗	
12		
13		
14		
15		
16	证 遗	
17		
18		
19		
20		
21		
22		
23		
24		
25		
26		
27		
28		
29		
30		

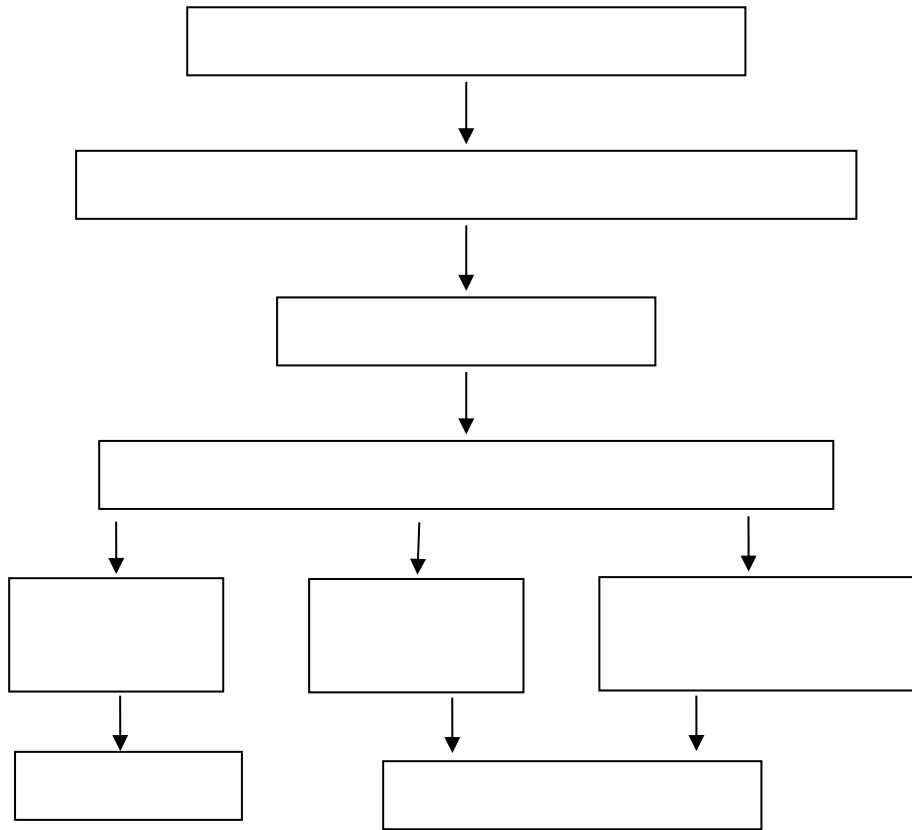
学生转专业管理流程



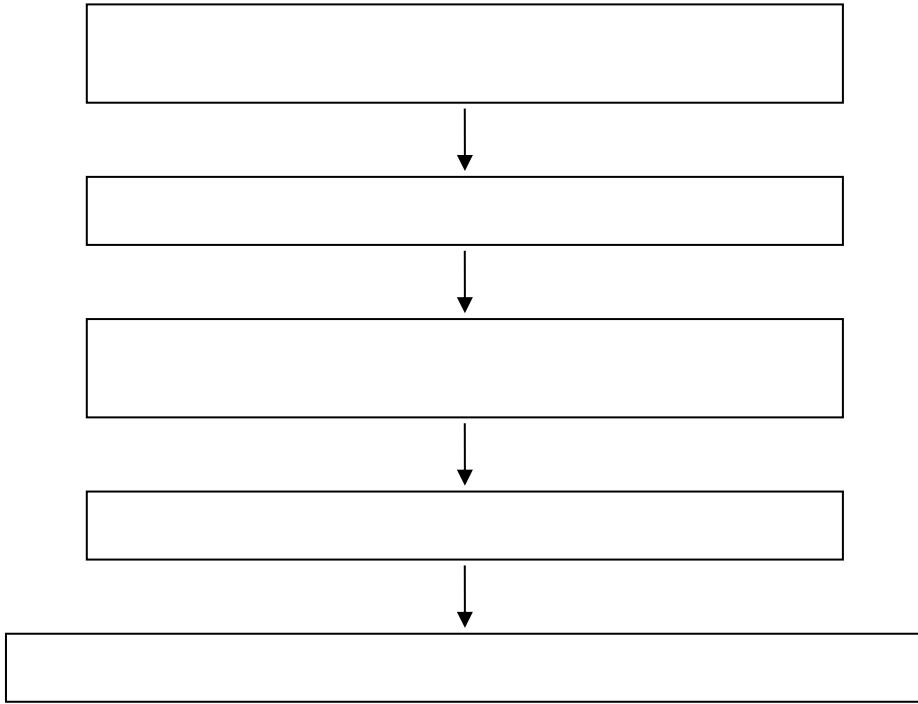
学生退学管理流程图



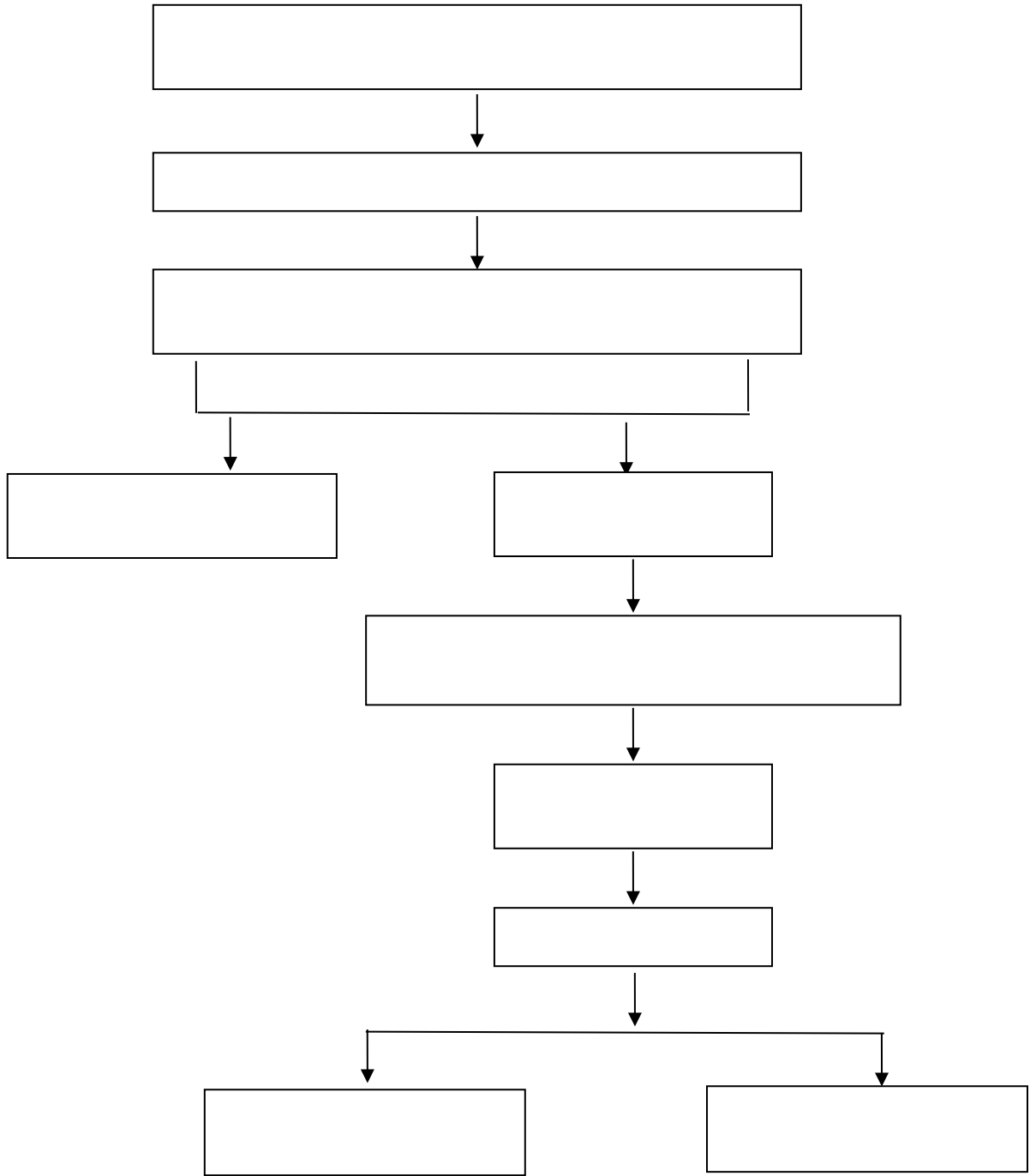
学生休学、保留学籍、复学、重新编级流程



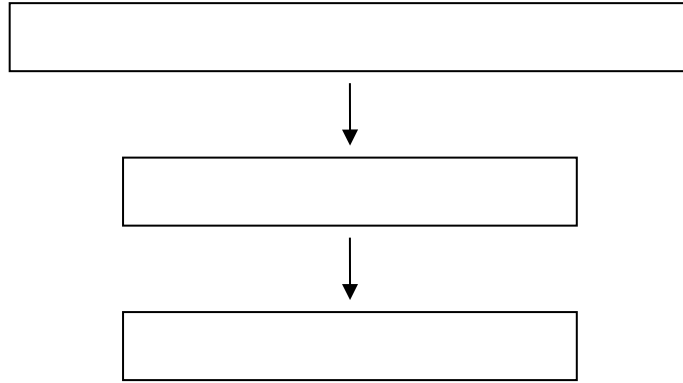
学生课程重新学习管理流程



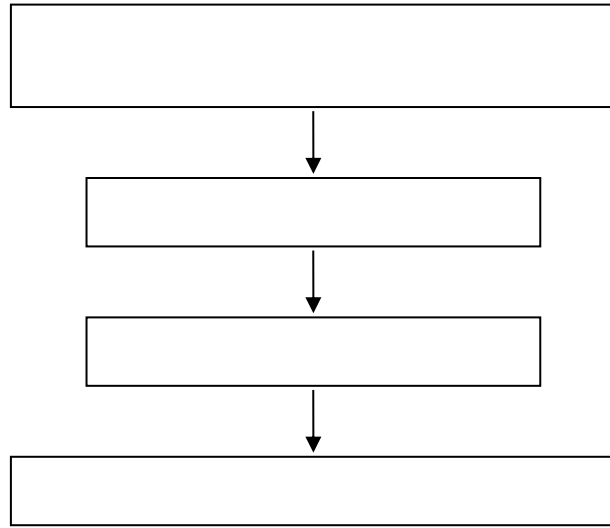
成绩管理流程



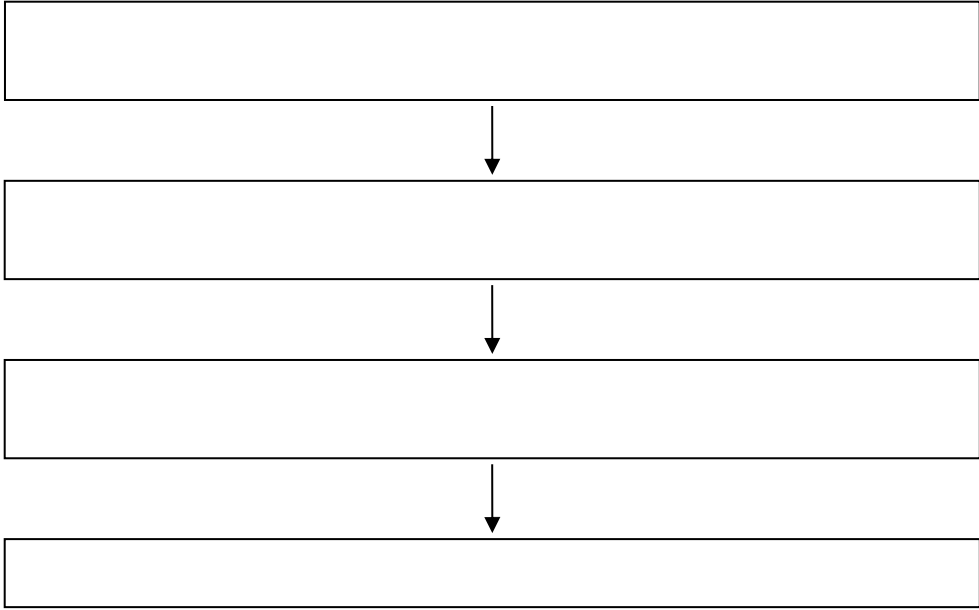
学生课程缓考管理流程



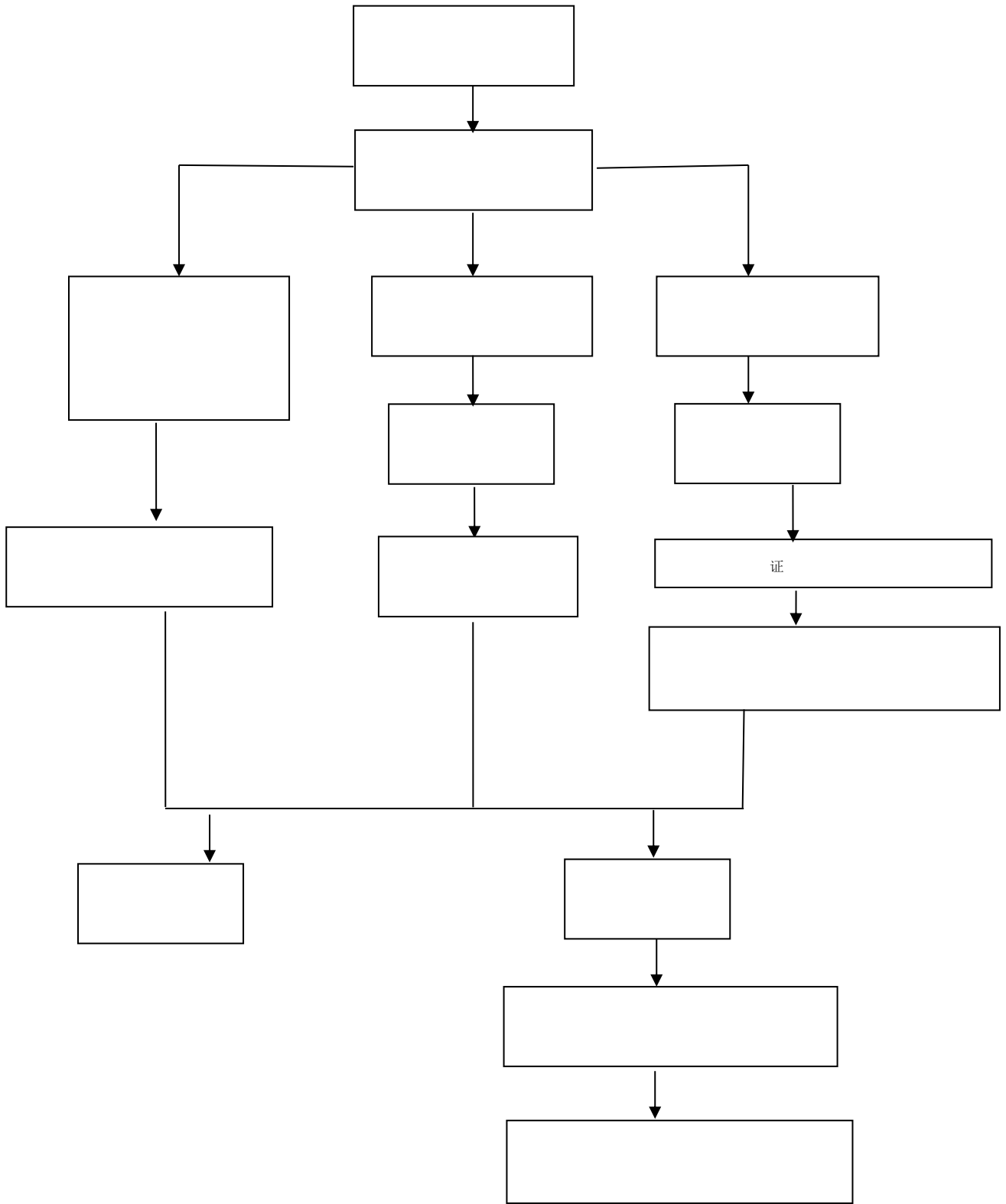
交流生学分认定办理流程



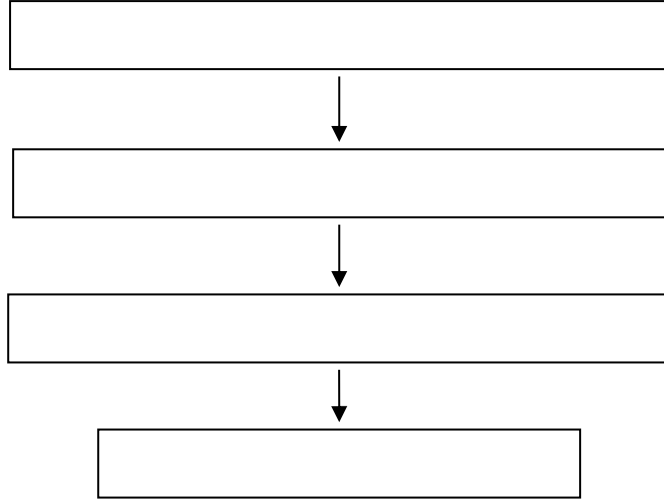
学生申请创新学分办理流程



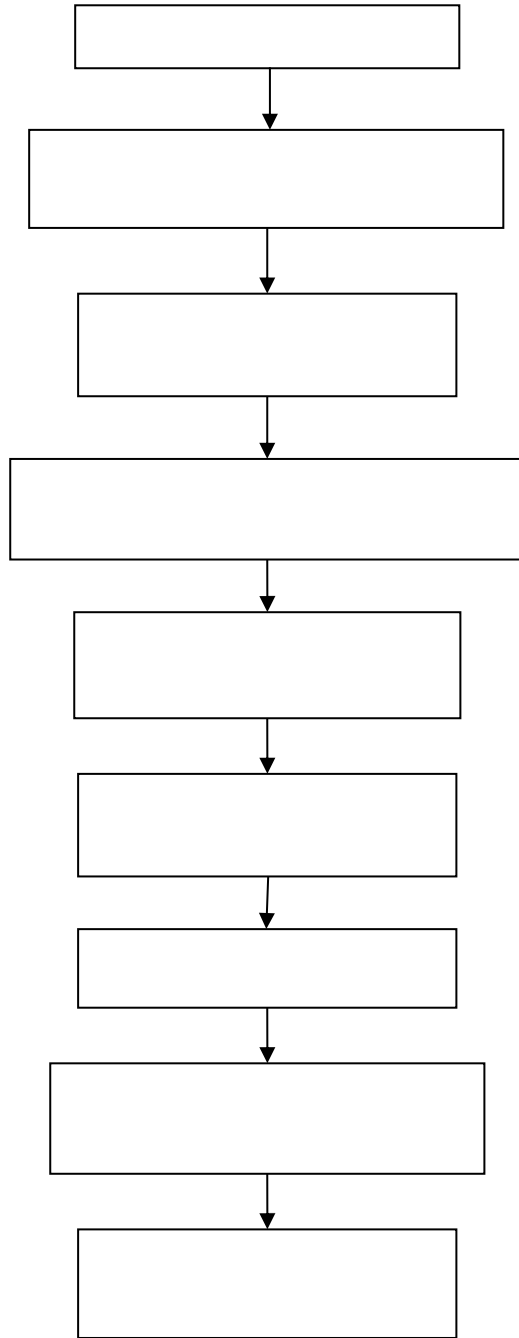
学生考试违纪处分流程图



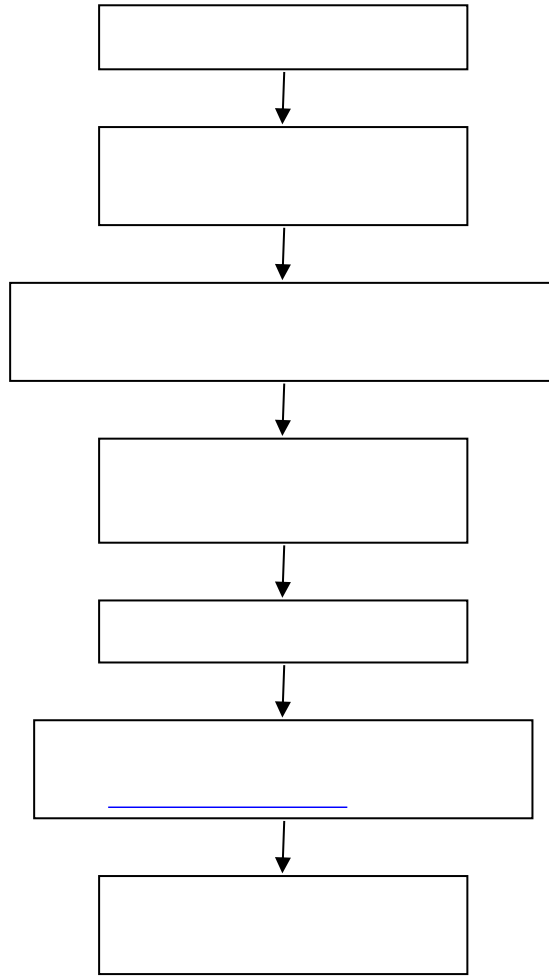
公共课程试卷送印流程



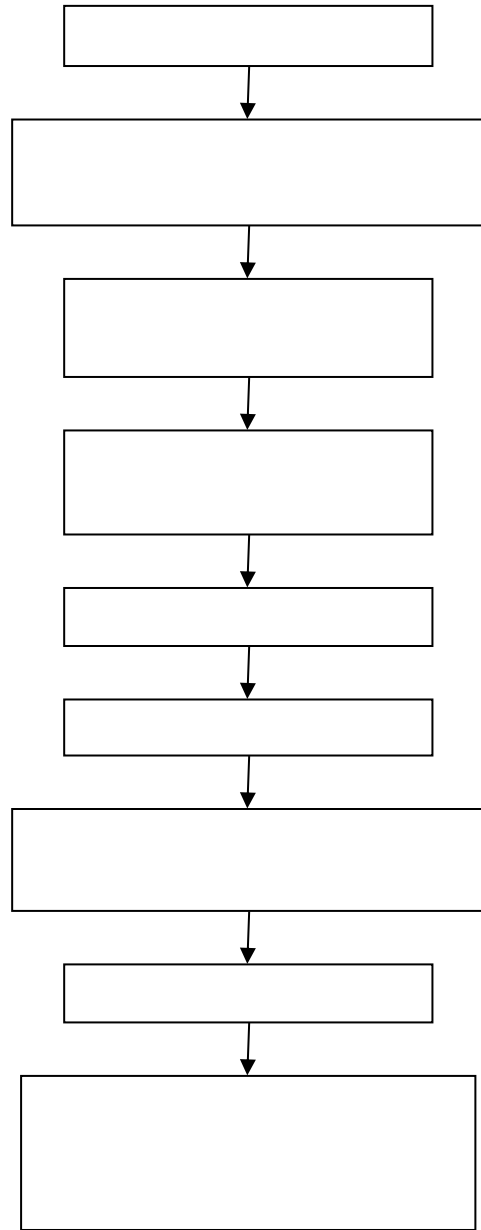
大学英语四、六级考试流程



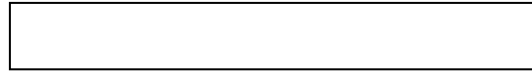
全国计算机等级考试流程



福建省高校计算机等级考试流程



课程表编排流程图



公共选修课报课、选课流程图

时间安排

[]

[]

[]

[]

教师报课

[]

[]

[]
证

学生选课

[]

[]

[]

[]

[]

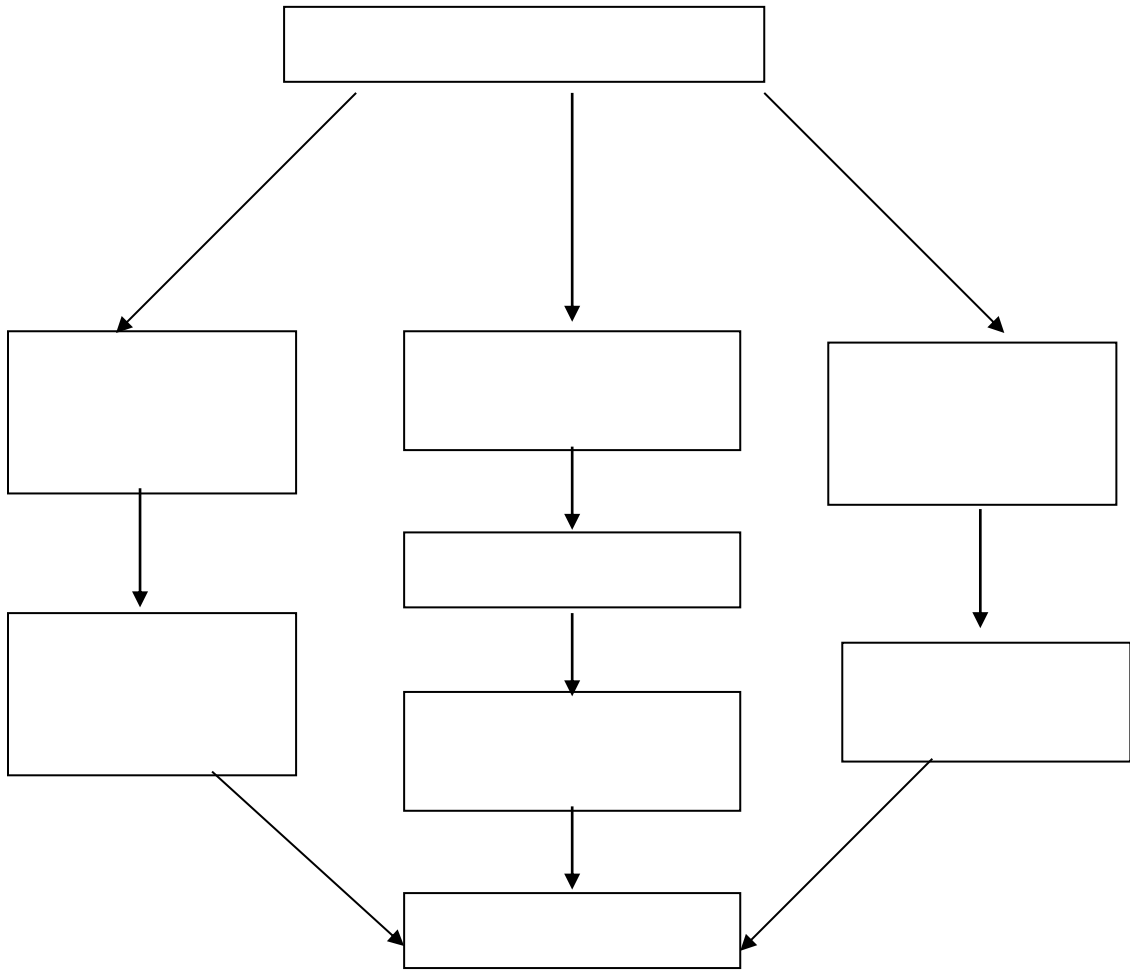
责任单位

[]

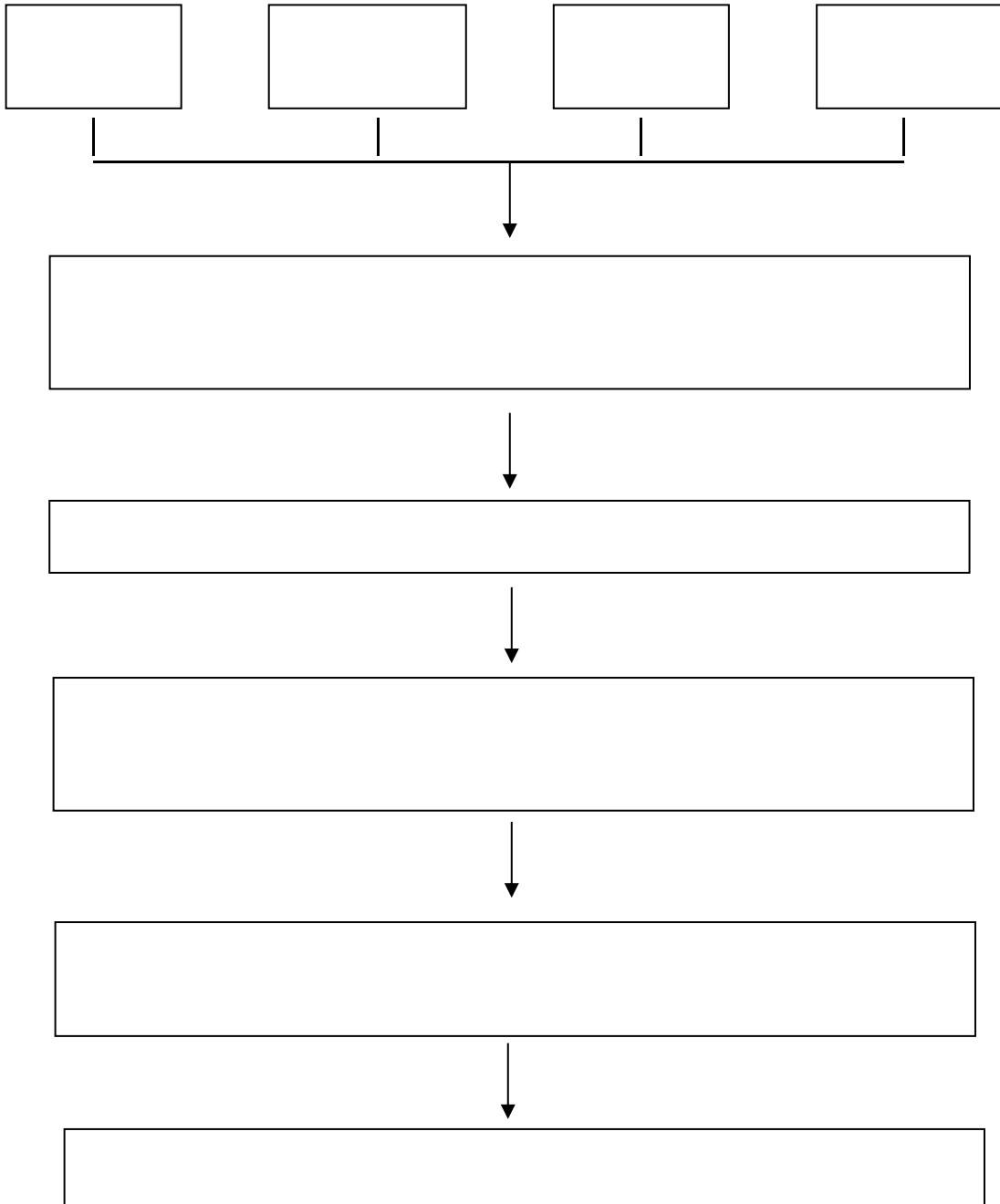
[]

[]

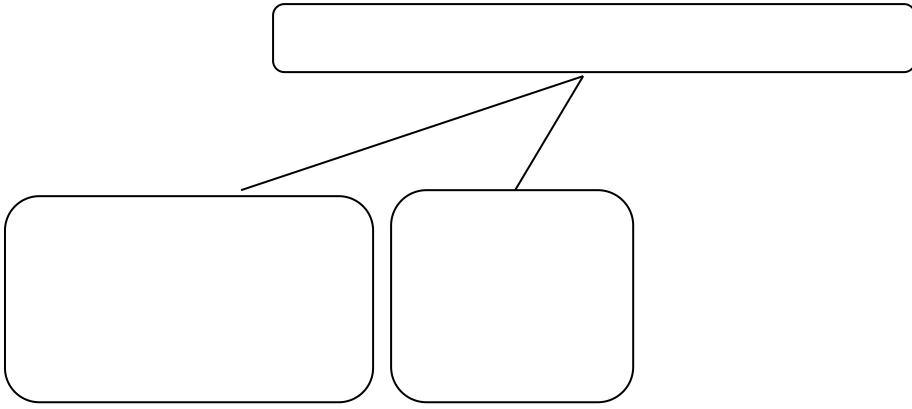
教室管理相关流程图



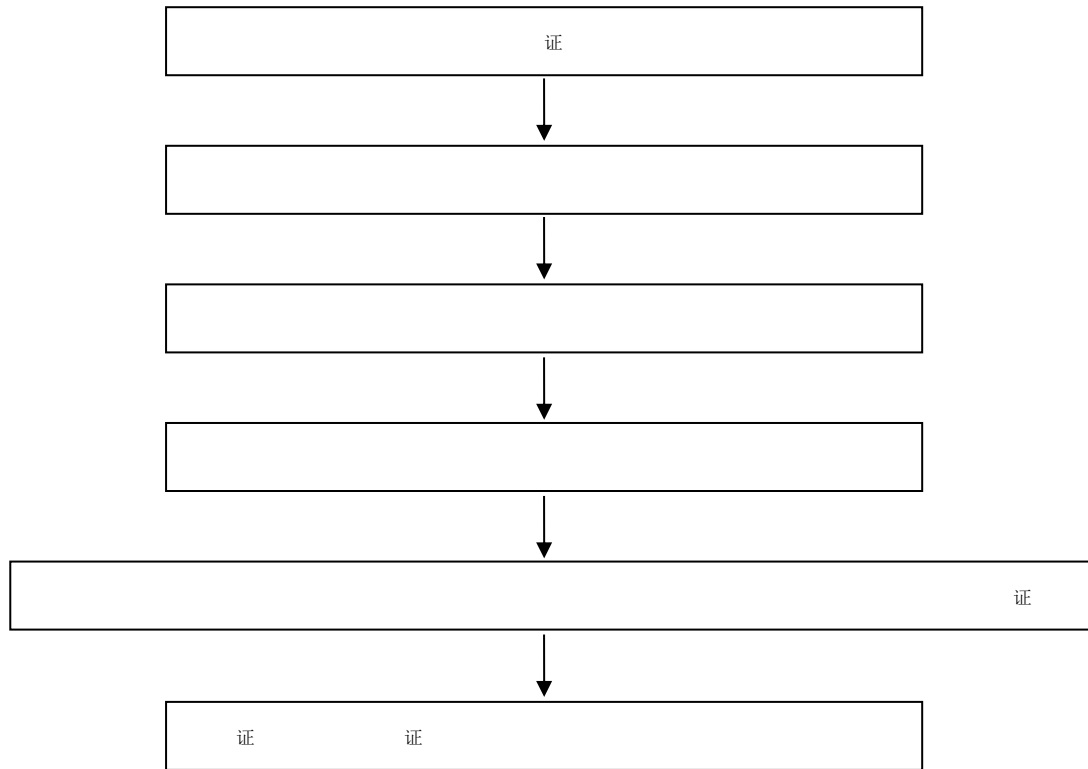
教学事故认定与处理流程图



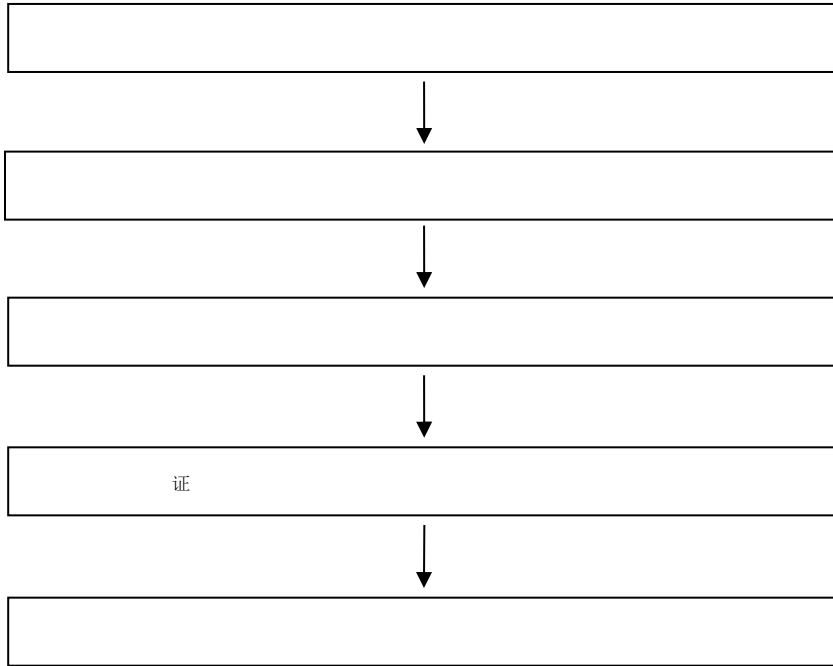
普通高等教育学士学位授予流程图



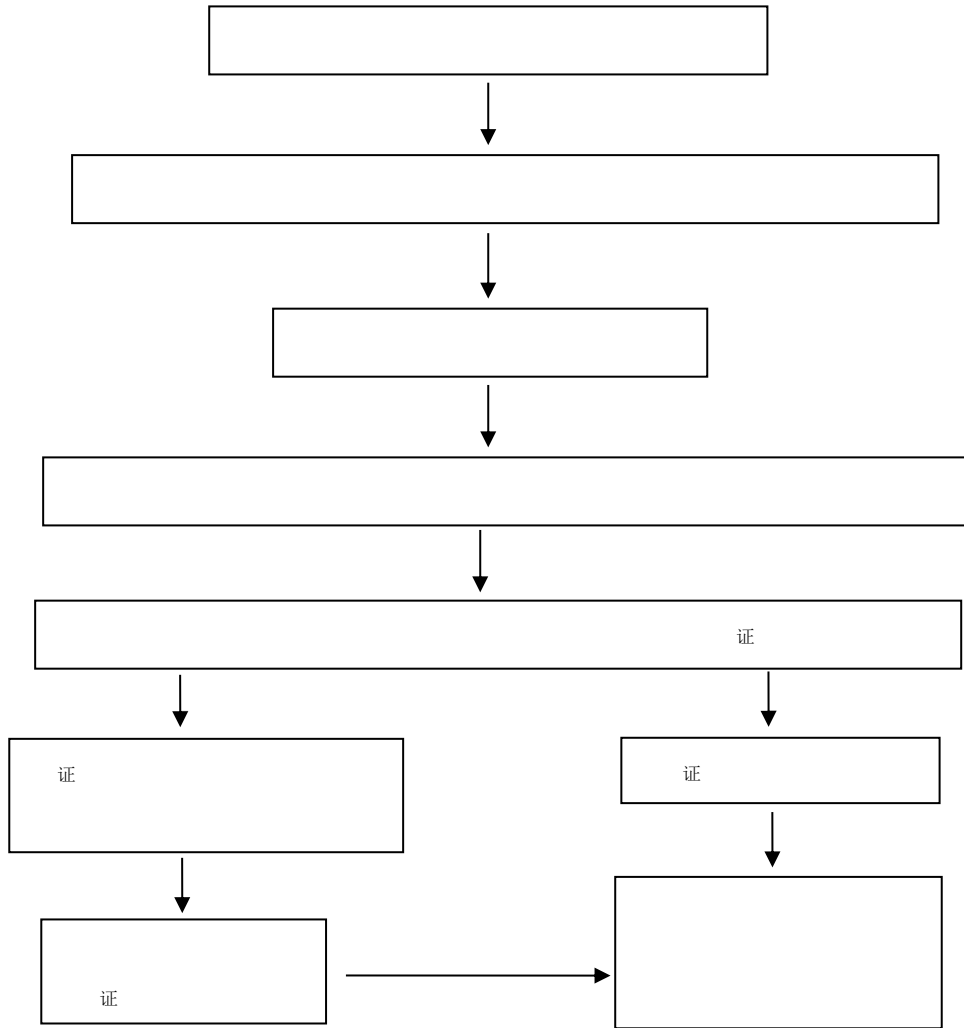
交流生面试组织流程



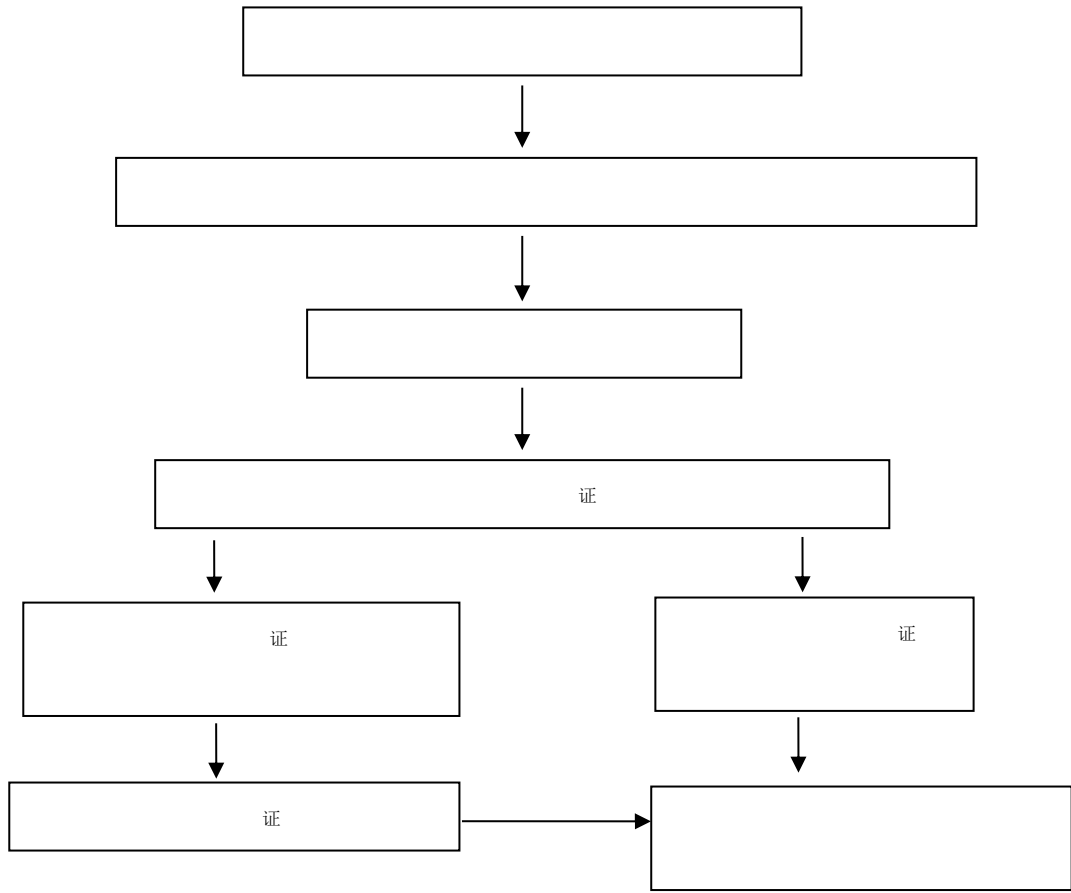
学生申请省级及以上学科竞赛奖励流程



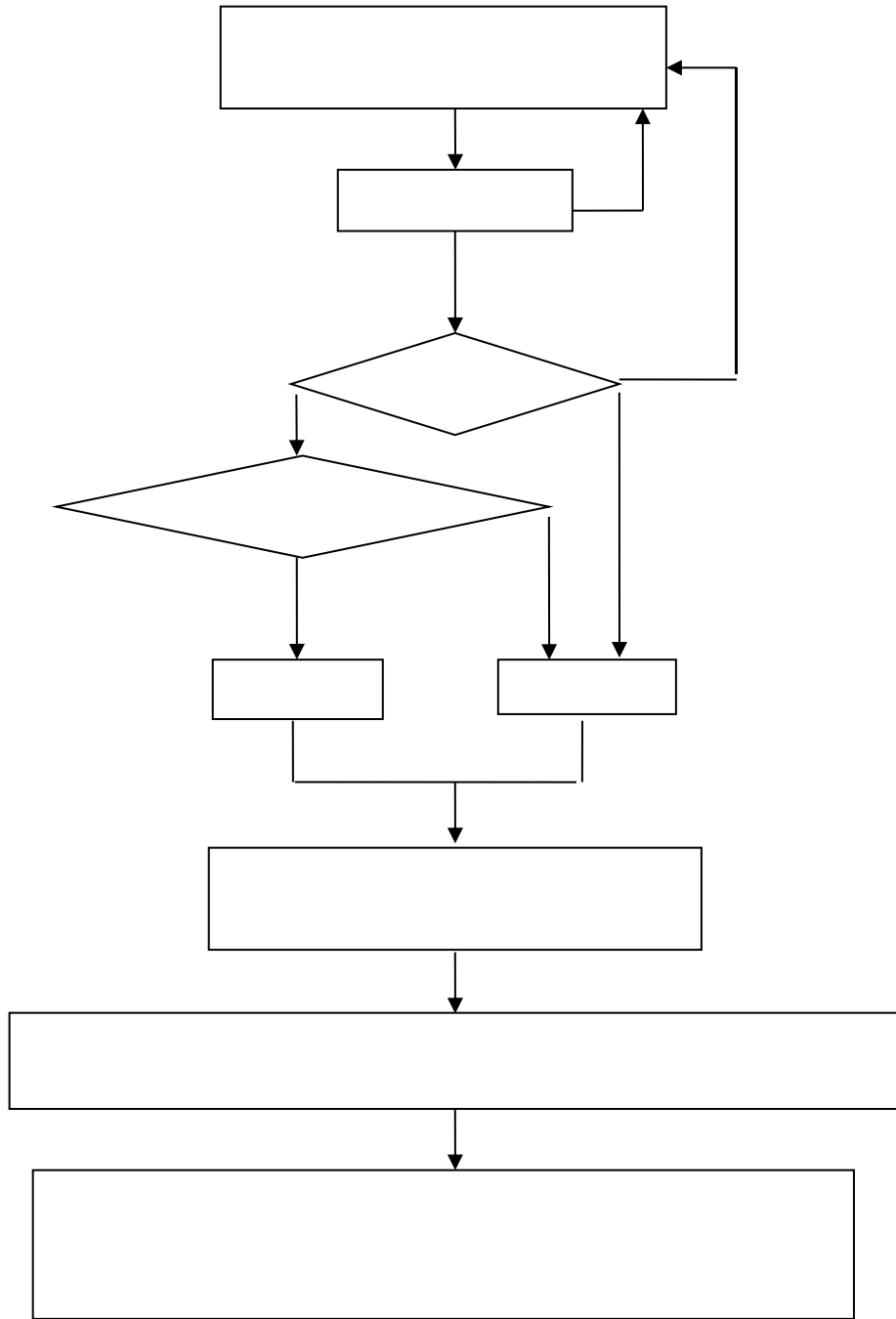
各类教改项目申报流程



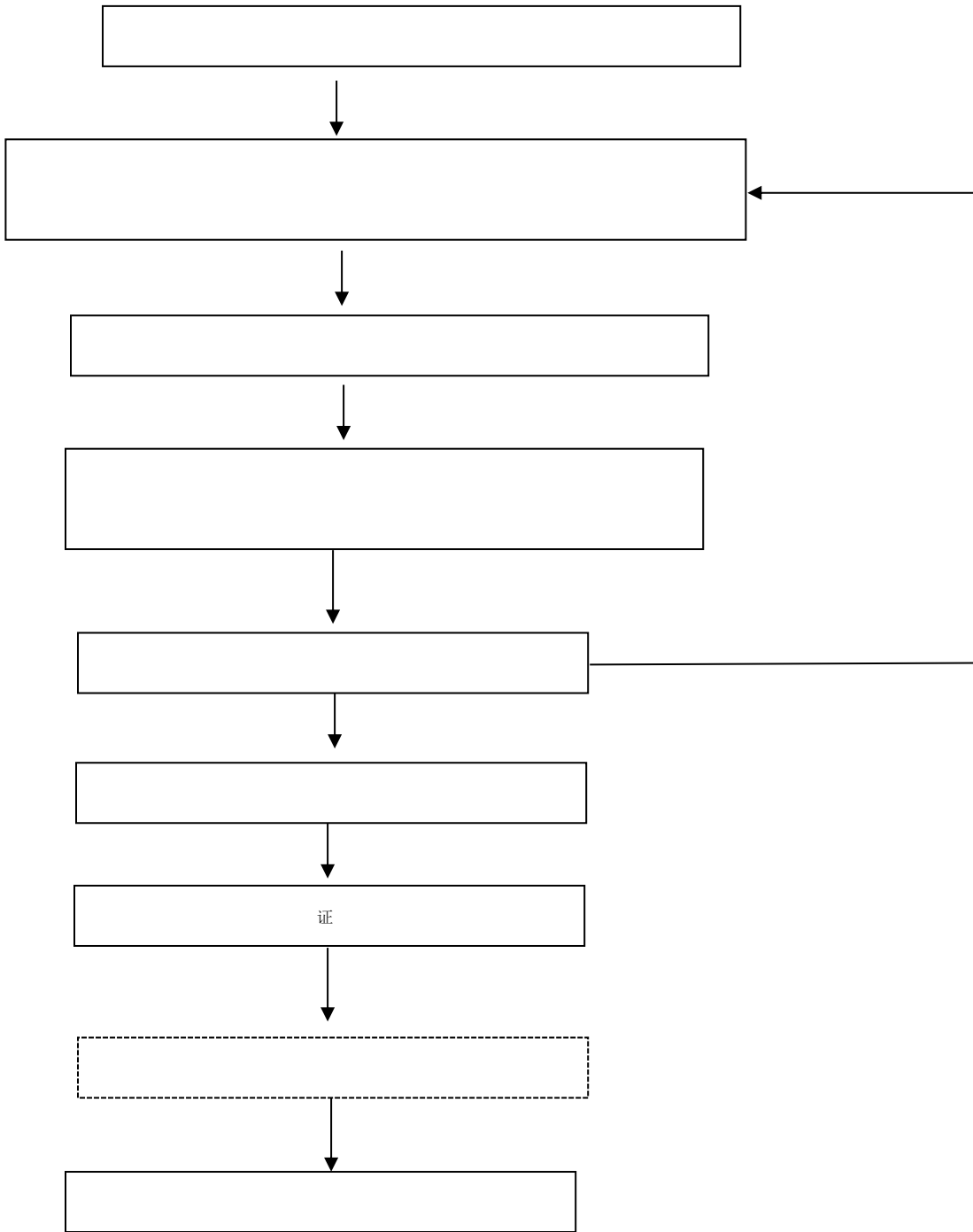
教学竞赛活动流程



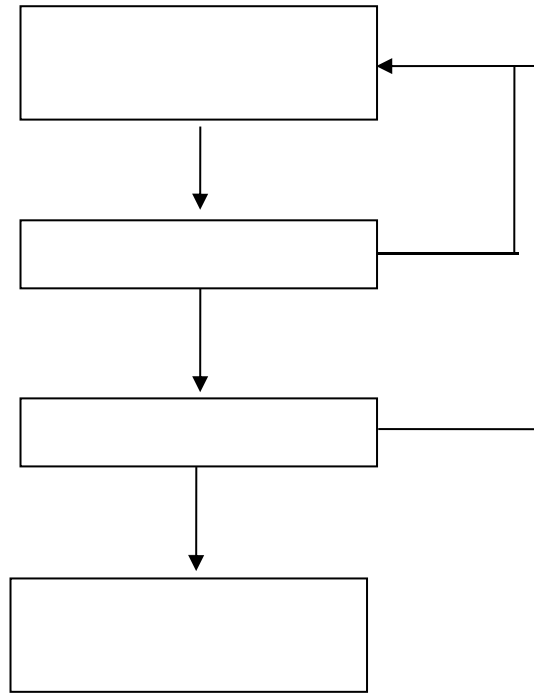
大学生创新创业训练计划项目管理流程图



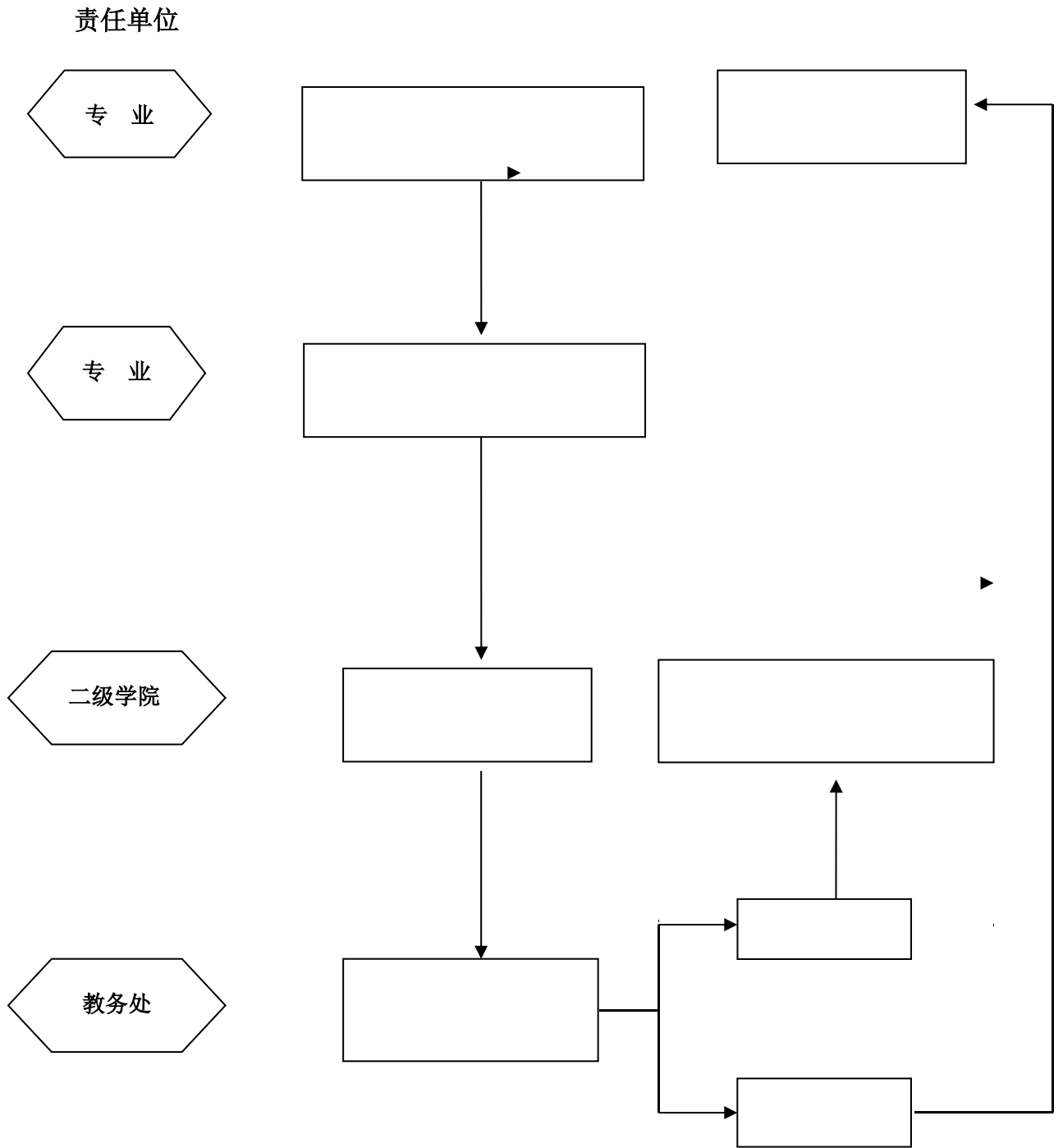
教学设备采购项目申报工作流程图



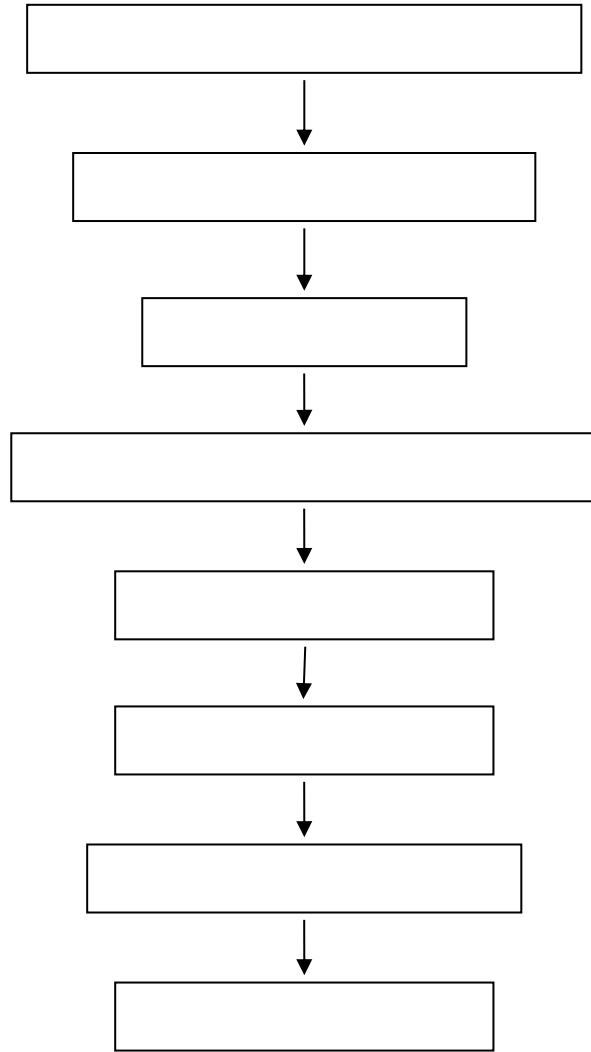
教学实验用房调配流程图



实践教学基地建设工作流程图



教材业务运行工作流程



教材采供管理流程图

